

Center for Quality Engineering

Test Report No.: T1630001

Order No.: T163

Pages: 18

Munich, Sep 29, 2005

Client:	Schroff SAS R&D Cabinets and Cases
Equipment Under Test:	Cabinet Varistar SL Bellcore4 - 3xATCA
Manufacturer:	Schroff SAS
Task:	Earthquake-Testing
Test Specification(s): [covered by accreditation]	ETSI EN 300 019-2-3 V2.2.2 (2003-04) Earthquake
Result:	The EUT was subject to the tests listed in detail in ch. 6 of this report and complies with the corresponding requirements.

The test report shall not be reproduced except in full without the written approval of the testing laboratory

The results relate only to the items tested as described in this test report.

approved by:

Date

Signature

Alt
Director 'Environmental Engineering'

Oct 11, 2005



This document was signed electronically.

The Center for Quality Engineering of the Siemens Communications Group is accredited by DATech for
COMPONENTS TESTING ENVIRONMENTAL ENGINEERING ELECTROMAGNETIC COMPATIBILITY PRODUCT SAFETY
TELECOM CONFORMANCE TESTS

CONTENTS

1 Summary 4

2 References 4

 2.1 Specifications 4

3 General Information 5

 3.1 Identification of Client 5

 3.2 Test Laboratory 5

 3.3 Time Schedule 5

 3.4 Participants 5

4 Equipment Under Test 6

5 Test Equipment 7

 5.1 Test Facility 7

 5.2 Measuring Equipment 7

6 Test Specifications and Results 8

 6.1 Earthquake (indoor) 8

 6.1.1 Vibration Response Investigation 8

 6.1.2 Earthquake Test 8

 6.2 Test Performance 9

 6.2.1 Vibration Response Investigation 9

 6.2.2 Earthquake test 10

 6.3 Test Results 12

 6.3.1 Results Vibration Response Investigation 12

 6.3.2 Results Earthquake Test 15

 6.3.3 Results of Displacement measurement 18

 6.4 Evaluation 18

The test report shall not be reproduced except in full without the written approval of the testing laboratory

LIST OF PHOTOS

Pic. 1: Cabinet Varistar SL Bellcore – 3xATCA 6

Pic. 2 Mounting of EUT Z-Axis (Vibration Response Investigation)e 9

Pic. 3 Mounting of EUT X-Axis (Vibration Response Investigation) 10

Pic. 4 Mounting of EUT X-Axis (Vibration Response Investigation)Example 10

Pic. 5 Measuring point – earthquake table 10

Pic. 6 Measuring equipment LVTD for displacement 11

Pic. 7 EUT mounted on the earthquake table 11

LIST OF FIGURES

Figure 6.1: Acceleration at Vibration Table (X-Axis) 12
Figure 6.2: Vibration Response at the Top of EUT (X-Axis)..... 13
Figure 6.3: Acceleration at Vibration Table (Y-Axis) 13
Figure 6.4: Vibration Response at the Top of EUT (Y-Axis)..... 14
Figure 6.5: Acceleration at Vibration Table (Z-Axis) 14
Figure 6.6: Vibration Response at the Top of EUT (Z-Axis)..... 15
Figure 6.7: Acceleration at Earthquake Table (X-Axis) 16
Figure 6.8: Test Response Spectrum (X-Axis) 16
Figure 6.9: Acceleration at Earthquake Table (Y-Axis) 16
Figure 6.10: Test Response Spectrum (Y-Axis)..... 17
Figure 6.11: Acceleration at Earthquake Table (Z-Axis) 17
Figure 6.12: Test Response Spectrum (Z-Axis)..... 17
Figure 6.13: illustrates the displacement at top of EUT X-axis..... 18
Figure 6.14: illustrates the displacement at top of EUT Y-axis..... 18

LIST OF TABLES

Table 6.1: Results - Resonance Frequencies..... 12

The test report shall not be reproduced except in full without the written approval of the testing laboratory

1 Summary

Testing was performed to determine if the EUT meets the requirements of

ETSI EN 300 019-2-3 V2.2.2 (2003-04)

Earthquake

The table below contains a detailed list of tests performed.

Requirement acc. to ETSI 300 019	Criteria met (yes/no)	Remark
Earthquake indoor	y	

2 References

2.1 Specifications

- [1] **ETSI EN 300 019-2-3 V2.2.2 (2003-04)**
Environmental Engineering (EE);
Environmental conditions and environmental tests for telecommunications equipment;
Part 2-3: Specification of environmental tests;
Stationary use at weatherprotected locations
- [2] **IEC 60068-2-57 : 1999-11**
Environmental testing
Part 2-57: Tests , Test Ff: Vibration –Time-history method
- [3] **IEC 60068-2-6 : 1995-03**
Environmental testing
Part 2 : Tests , Test Fc: Vibration (sinusoidal)

The test report shall not be reproduced except in full without the written approval of the testing laboratory

3 General Information

3.1 Identification of Client

Schroff SAS
R&D Cabinets and Cases
Z.I.-4.Rue du Marais
F-67660 Betschdorf
Jacques Fischer

3.2 Test Laboratory

Center for Quality Engineering
Siemens AG
Hofmannstraße 51
81359 München

3.3 Time Schedule

Delivery of EUT: Sep 15, 2005
Start of test: Sep 16, 2005
End of test: Sep 16, 2005

3.4 Participants

Name	Function	Phone	E-Mail
Alfred Knier	Accredited testing	+49 89 722-48726	alfred.knier@siemens.com
Jacques Fischer	Client	0033 3 88 90 65 09	Jacques_Fischer@schroff.fr

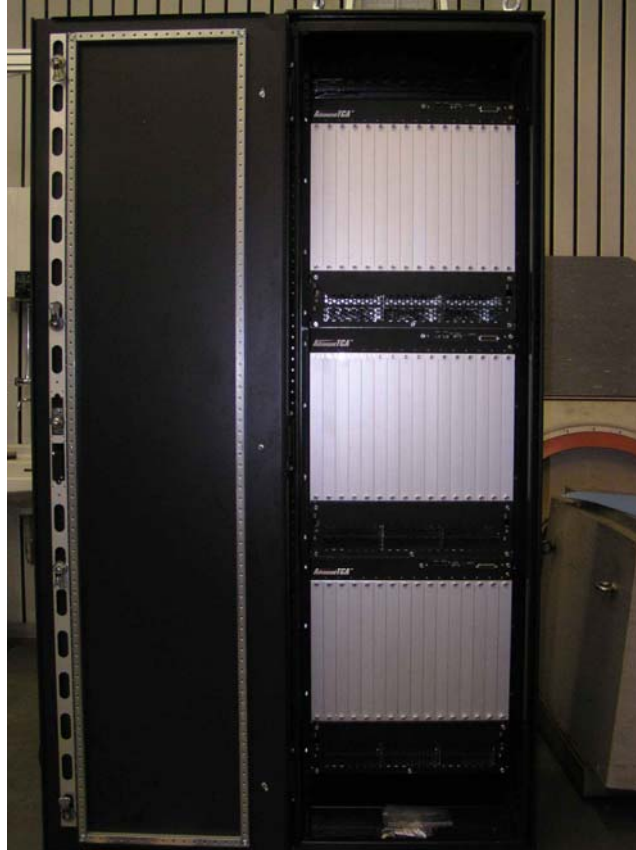
The test report shall not be reproduced except in full without the written approval of the testing laboratory

4 Equipment Under Test

Cabinet Varistar SL Bellcore – 3xATCA

Completed with 3 ATCA-shelves as dummy weights

Weight: 444Kg



The test report shall not be reproduced except in full without the written approval of the testing laboratory

Pic. 1: Cabinet Varistar SL Bellcore – 3xATCA

5 Test Equipment

5.1 Test Facility

The measurements were carried out in the Center for Quality Engineering: Siemens AG, Department Com CTO CQE 31, Hofmannstraße 50, 81359 München, Germany.

5.2 Measuring Equipment

Earthquake

ID No.	Equipment	Manufacturer	Status	Last Cal.	Next Cal.
	Earthquake Test System 84A				
S0353	Earthquake Test System	MTS	cnn		
S0420	Displacement Measuring Device	Schaevitz	ind		
S0896	Control System for Earthquake		cnn		
S0919	Amplifier	Endevco	cal	Jan 03, 2005	Jan 2006
S0922	Power Supply	Endevco	cnn		
S5398	Accelerometer	Endevco	cal	Feb 07, 2005	Feb 2007
S5453	Software Version 3.3A	MTS	cnn		
S5453	Software Version 2.2	MTS	cnn		
S5544	Position Transducer	National Oilwell	chk	Feb 08, 2005	Feb 2006
S5453	Software Version 2000 Prof	MTS	cnn		

cal = Calibration, car = Calibration restricted use, chk = Check, chr = Check restricted use, cpu = Check prior to use, cnn = Calibration not necessary, ind = for indication only

Resonance search

ID No.	Equipment	Manufacturer	Status	Last Cal.	Next Cal.
	Vibration Test System 80A				
S0795	Frequency Counter	Newport	ind		
S0854	Frequency Display	Newport	ind		
S1402	Charge Amplifier	Unholtz Dickie	cal	Feb 23, 2005	Feb 2006
S1403	Charge Amplifier	Unholtz Dickie	cal	Feb 23, 2005	Feb 2006
S1418	Paragon Mainframe	Hewlett Packard	cal	Feb 23, 2005	Feb 2006
S1419	Vibration Exciter VIB9000	RMS	cal	Feb 23, 2005	Feb 2006
S5004	Oscilloscope	Siemens	ind		
S5325	Personal Computer with VibControl/NT 2.8.0	Fujitsu Siemens	cnn		
S5449	Software Version 2.8.0	M&P	cnn		
S5082	Accelerometer	Bruel & Kjaer	cal	Dec 08, 2004	Dec 2006
S5080	Accelerometer	Bruel & Kjaer	cal	Dec 08, 2004	Dec 2006

The test report shall not be reproduced except in full without the written approval of the testing laboratory

6 Test Specifications and Results

The test results in the report refer exclusively to the test object described in section 4 and the test period in section 3.3.

6.1 Earthquake (indoor)

ETSI EN 300 019-2-3 [2]; Stationary use at weather protected locations
Vibration Response Investigation (clause 4.1) and Earthquake Test (clause 4.2)

6.1.1 Vibration Response Investigation

Parameter	Severity	Method
Frequency range	1 to 35 Hz	IEC 60068-2-6 [3] Test Fc: Vibration
Vibration amplitude	2 m/s ²	
Sweep rate	≤ 1 octave/min	

6.1.2 Earthquake Test

Test	Parameter	Dim	Test severity	Duration	Reference	Method
Earthquake Time History	RRS		Table 5	30 sec	IEC 68-2-57	Ff: Time History Method
	Frequency Range	Hz	1 – 35			
	ZPA	m/s ²	15			
	Axes		3			
	Damping ratio	%	2			

Table 5 Acceleration Coordinates for the RRS

Co-ordinate Point	Frequency (Hz)	Ground Acceleration (m/s ²)
1	1,0	30
2	2,0	50
3	5,0	50
4	15,0	15
5	35,0	15

The test report shall not be reproduced except in full without the written approval of the testing laboratory

6.2 Test Performance

The EUT were mounted to the earthquake table in its normal use position on a aluminum plate of 40mm thickness.

The test was performed in 3 mutually perpendicular axes.

horizontal longitudinal front to back = Y-axis
 horizontal lateral = X-axis
 vertical = Z-axis

Tests performed in normal use attitude.

6.2.1 Vibration Response Investigation

Before execution of the main earthquake tests a vibration response investigation (resonance search) was performed on the electro dynamic vibration system VIB 9000 in 3 mutually perpendicular axes with the following parameters:

Frequency Range:	1.5 to 35 Hz
Acceleration:	2 m/s ²



Pic. 2 Mounting of EUT Z-Axis (Vibration Response Investigation)e

The test report shall not be reproduced except in full without the written approval of the testing laboratory

The test report shall not be reproduced except in full without the written approval of the testing laboratory



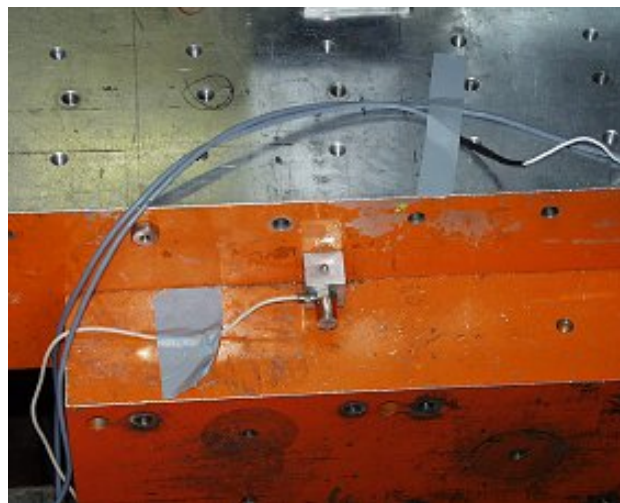
Pic. 3 Mounting of EUT X-Axis (Vibration Response Investigation)



Pic. 4 Mounting of EUT X-Axis (Vibration Response Investigation)Example

6.2.2 Earthquake test

Control point in direction of excitation and recording the time history over a time of 35 sec



Pic. 5 Measuring point – earthquake table

At The top of the EUT a measuring equipment were mounted to destinate displacement in sensing direction.



Pic. 6 Measuring equipment LVT for displacement



Pic. 7 EUT mounted on the earthquake table

The test report shall not be reproduced except in full without the written approval of the testing laboratory

6.3 Test Results

6.3.1 Results Vibration Response Investigation

The measured resonance frequencies are:

Table 6.1: Results - Resonance Frequencies

Axis	Frequency [Hz]
X	4.66
Y	6.5
Z	36.9

The test report shall not be reproduced except in full without the written approval of the testing laboratory

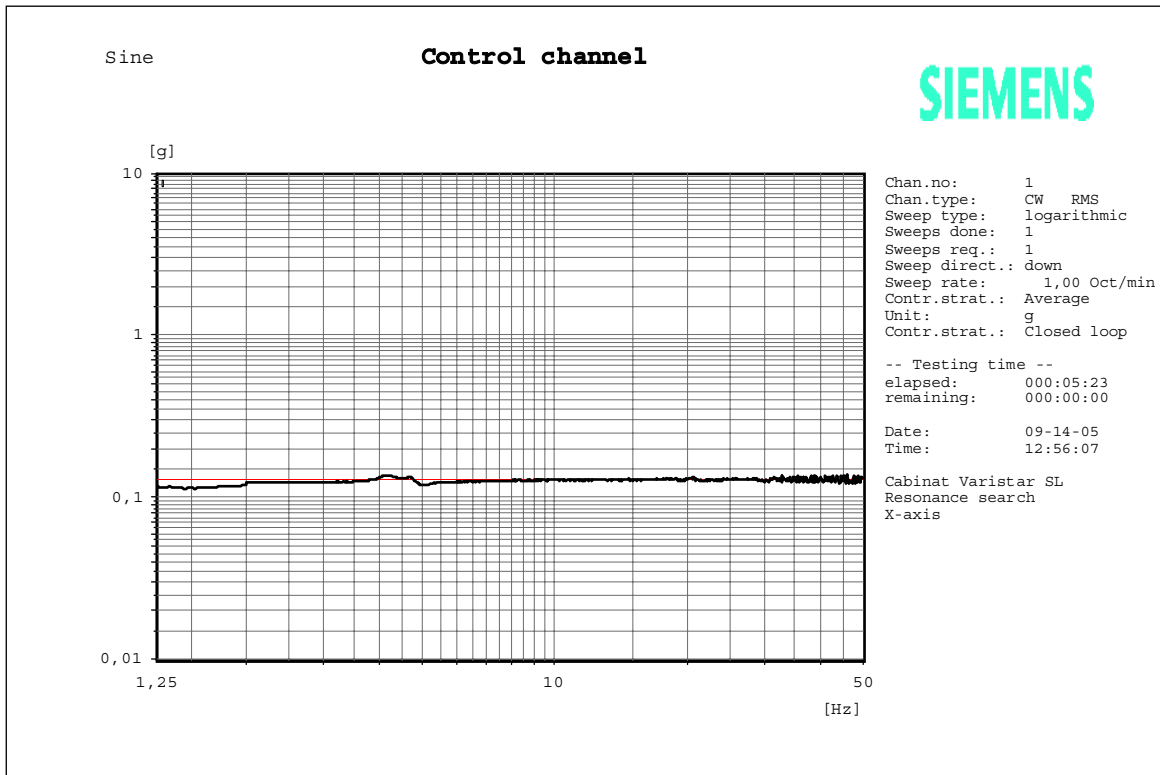


Figure 6.1: Acceleration at Vibration Table (X-Axis)

The test report shall not be reproduced except in full without the written approval of the testing laboratory

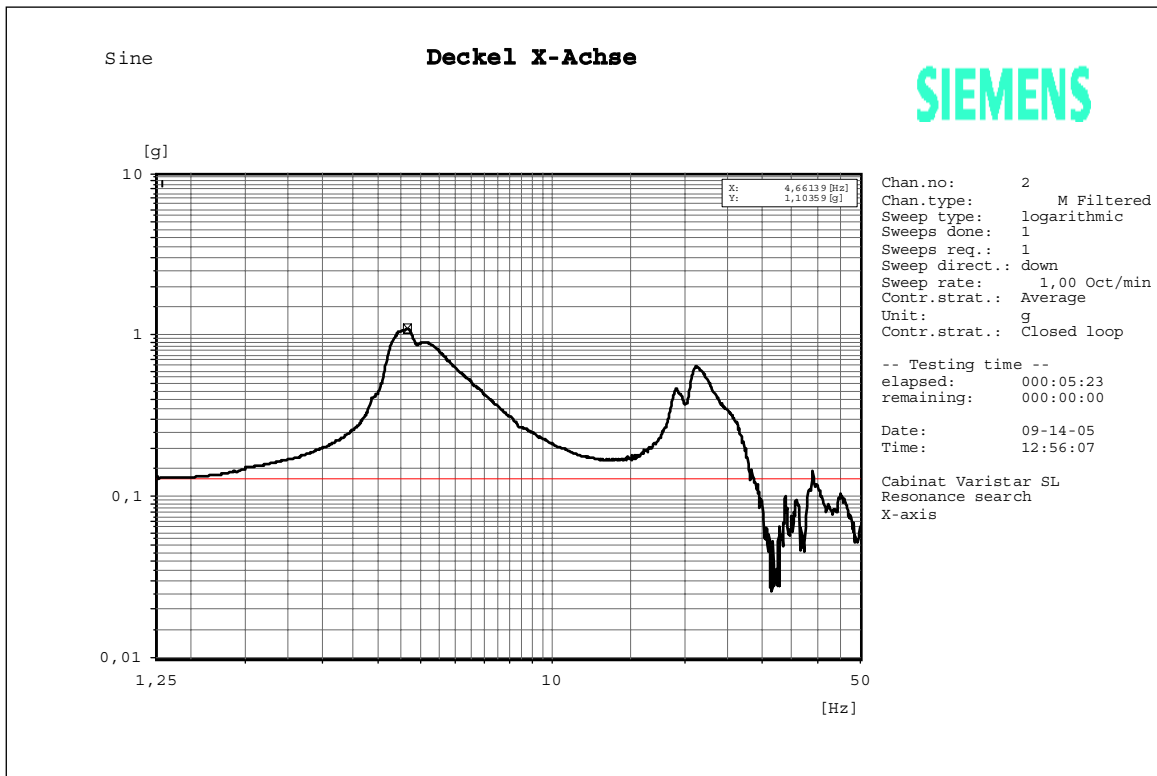


Figure 6.2: Vibration Response at the Top of EUT (X-Axis)

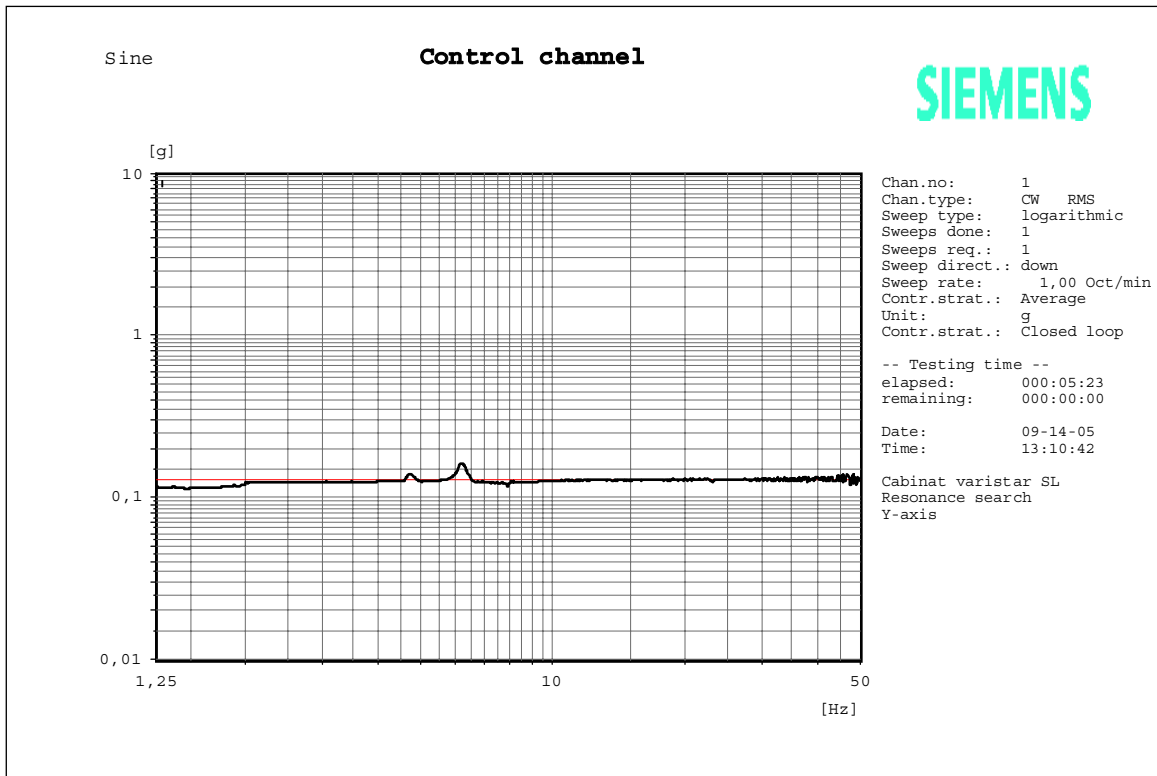


Figure 6.3: Acceleration at Vibration Table (Y-Axis)

The test report shall not be reproduced except in full without the written approval of the testing laboratory

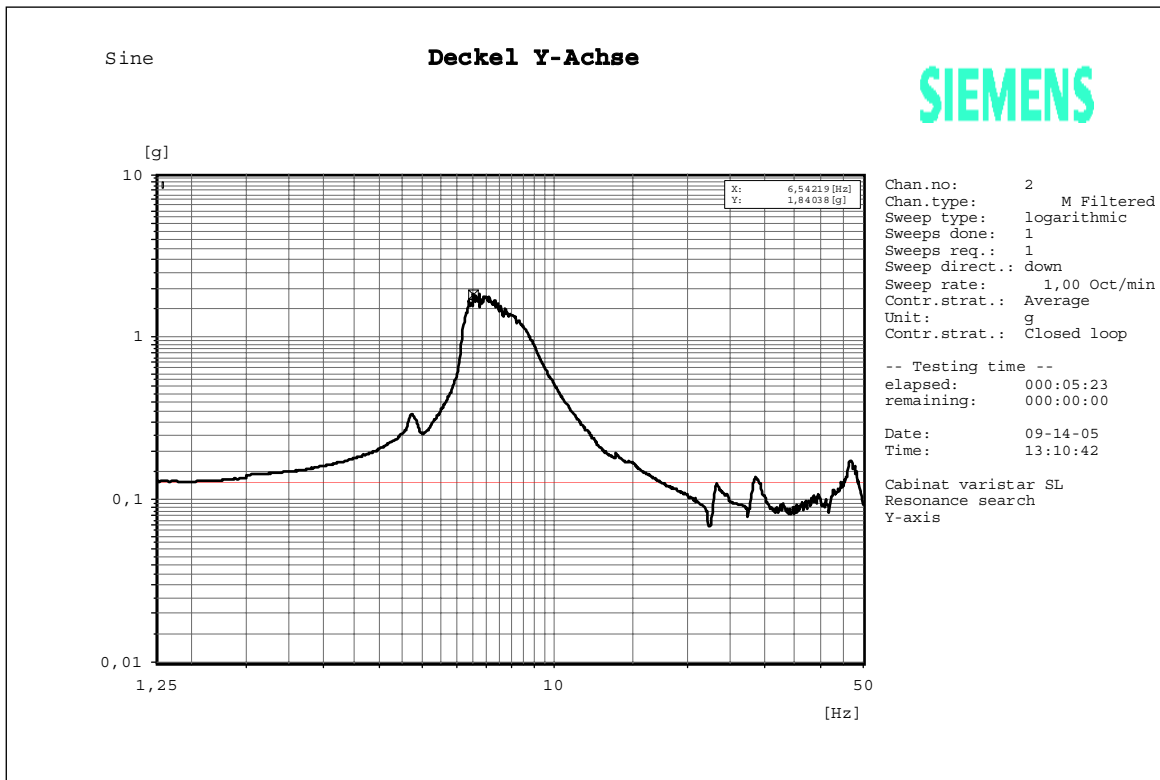


Figure 6.4: Vibration Response at the Top of EUT (Y-Axis)

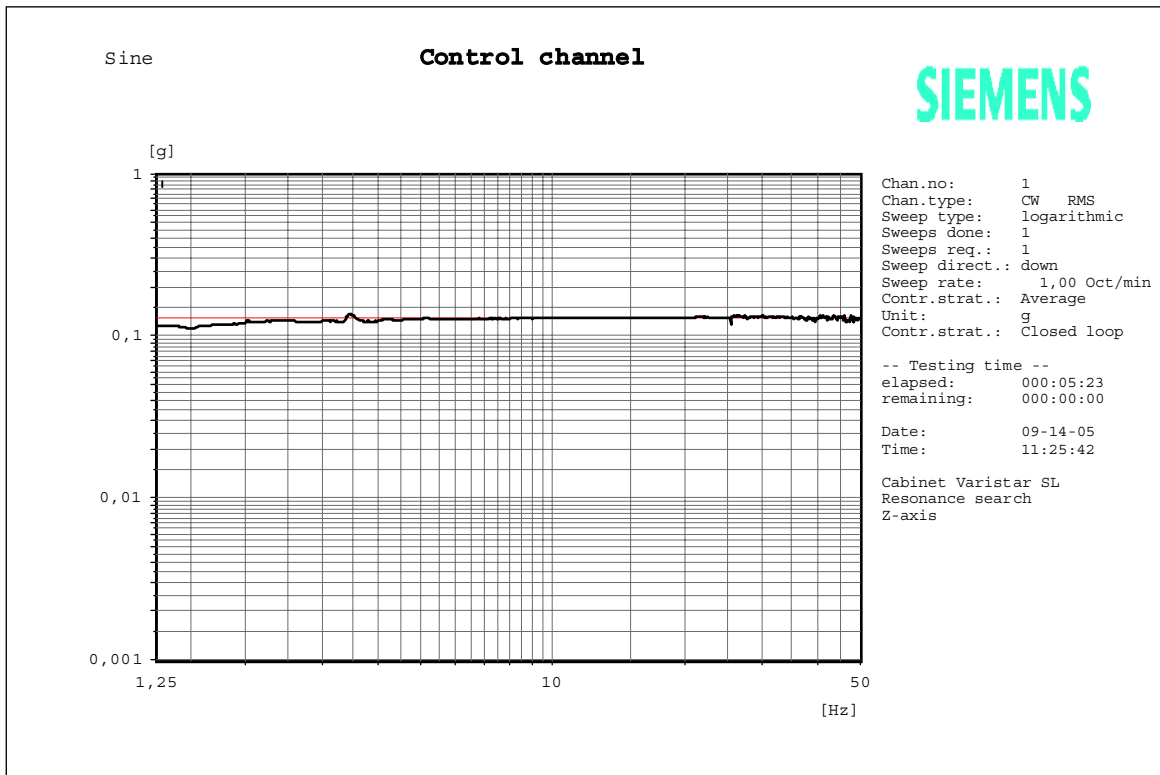


Figure 6.5: Acceleration at Vibration Table (Z-Axis)

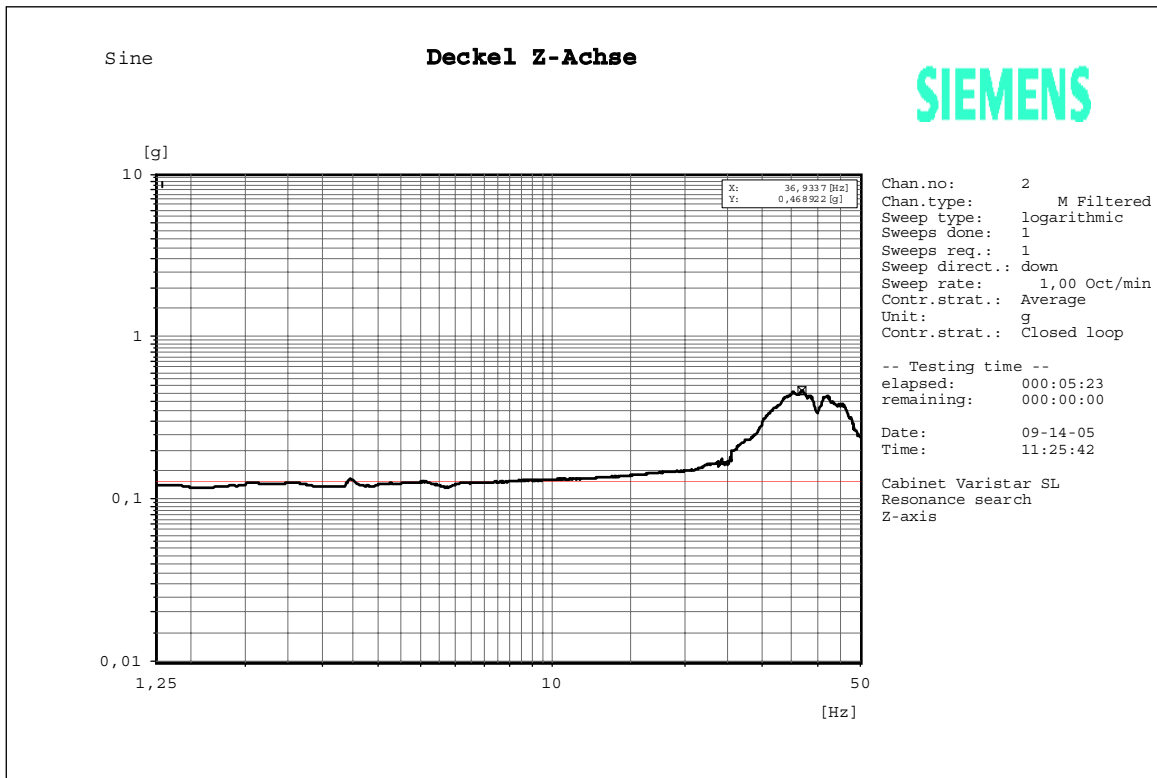


Figure 6.6: Vibration Response at the Top of EUT (Z-Axis)

6.3.2 Results Earthquake Test

Result: No mechanical deformation of the EUT could be ascertained during and after the test.

Earthquake TRS vs. RRS and Acceleration at EUT

The shaker table's analysed acceleration, known as Test Response Spectrum (TRS, red line), must meet or exceed the Required Response Spectrum (RRS, blue line) for the Earthquake Risk Zone 4 in the range from 1.0 to 35 Hz.

The following diagrams show the recorded plots for each axis.

The test report shall not be reproduced except in full without the written approval of the testing laboratory

X-axis (horizontal)

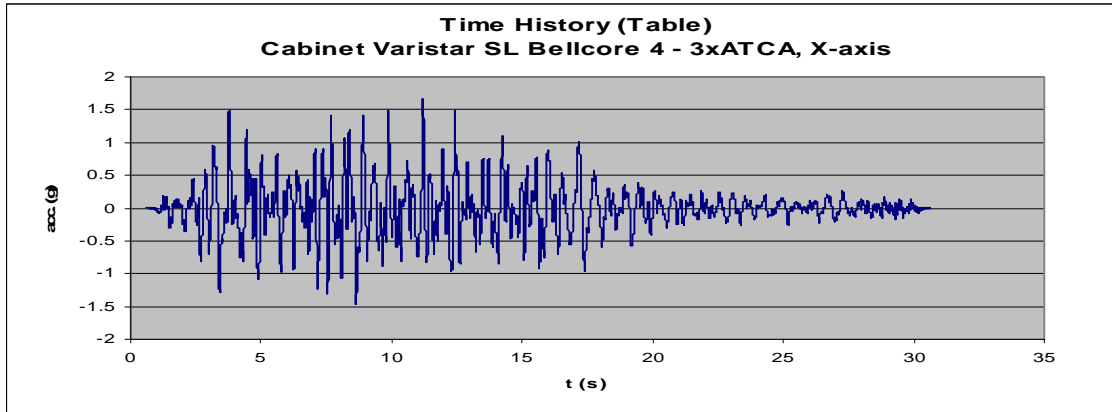


Figure 6.7: Acceleration at Earthquake Table (X-Axis)

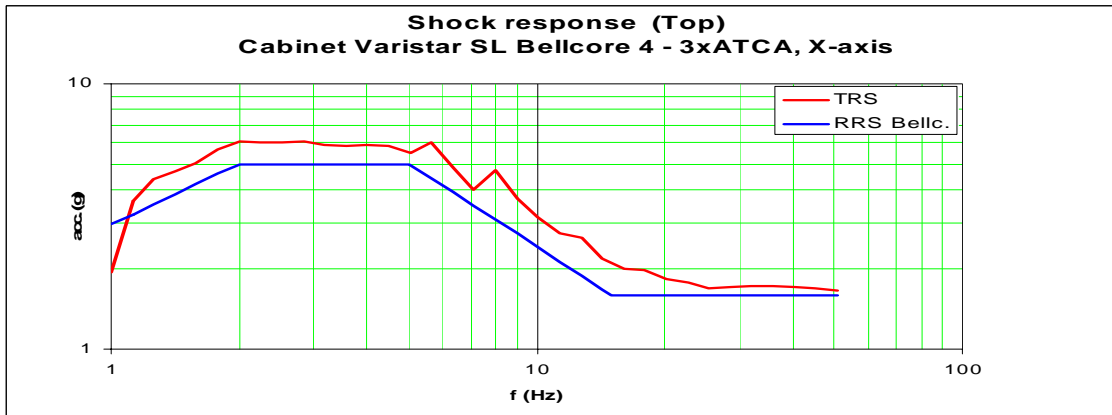


Figure 6.8: Test Response Spectrum (X-Axis)

The test report shall not be reproduced except in full without the written approval of the testing laboratory

Y-axis (horizontal)

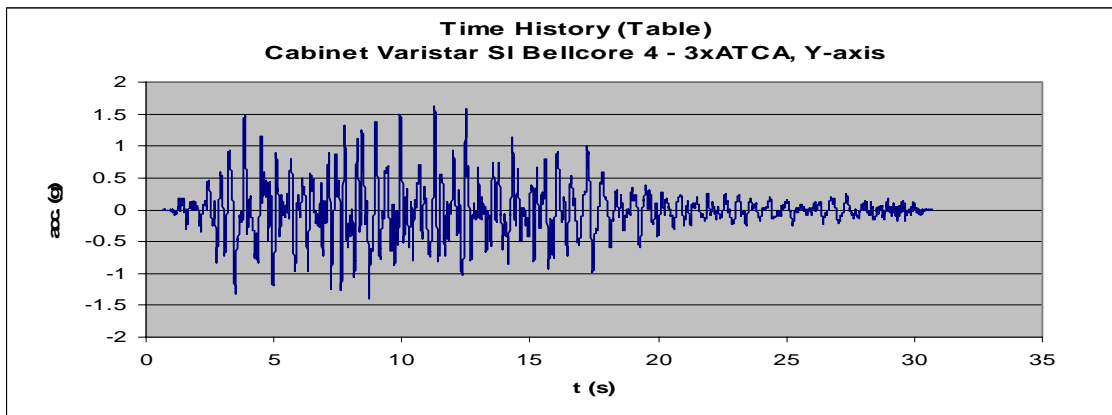


Figure 6.9: Acceleration at Earthquake Table (Y-Axis)

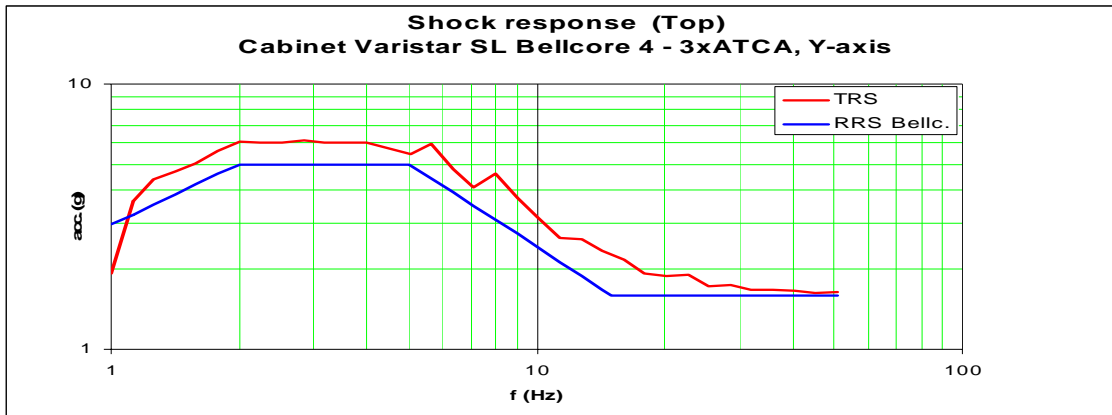


Figure 6.10: Test Response Spectrum (Y-Axis)

Z-axis (vertical)

The test report shall not be reproduced except in full without the written approval of the testing laboratory

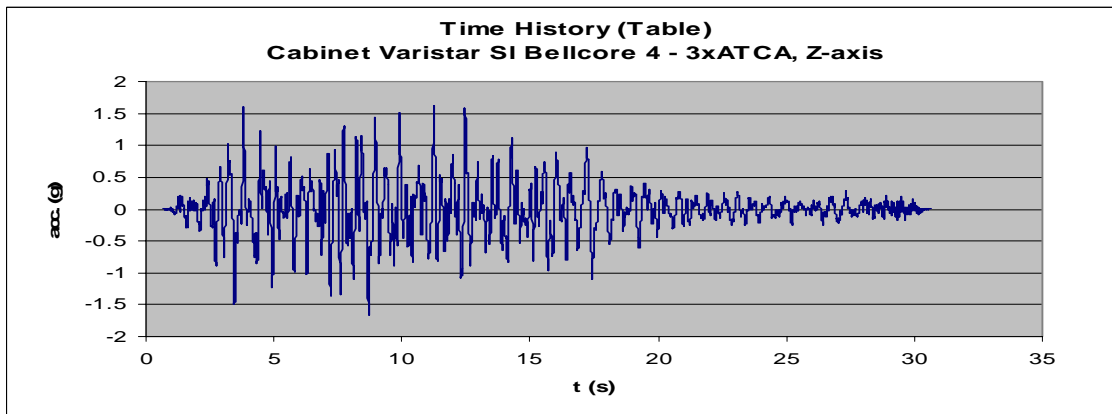


Figure 6.11: Acceleration at Earthquake Table (Z-Axis)

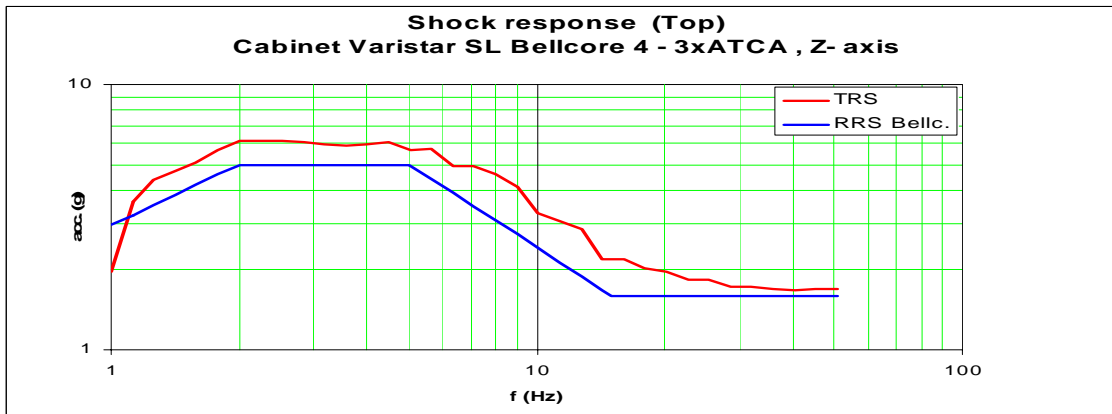


Figure 6.12: Test Response Spectrum (Z-Axis)

6.3.3 Results of Displacement measurement

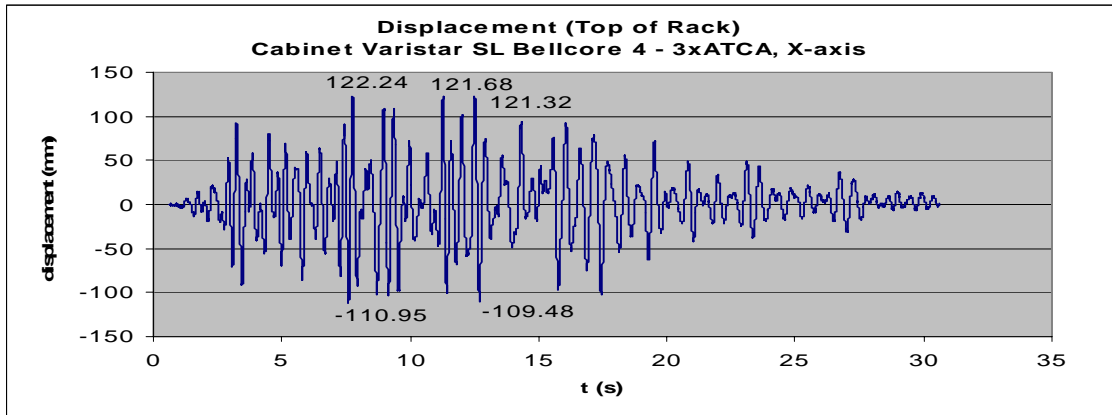


Figure 6.13: illustrates the displacement at top of EUT X-axis

The test report shall not be reproduced except in full without the written approval of the testing laboratory

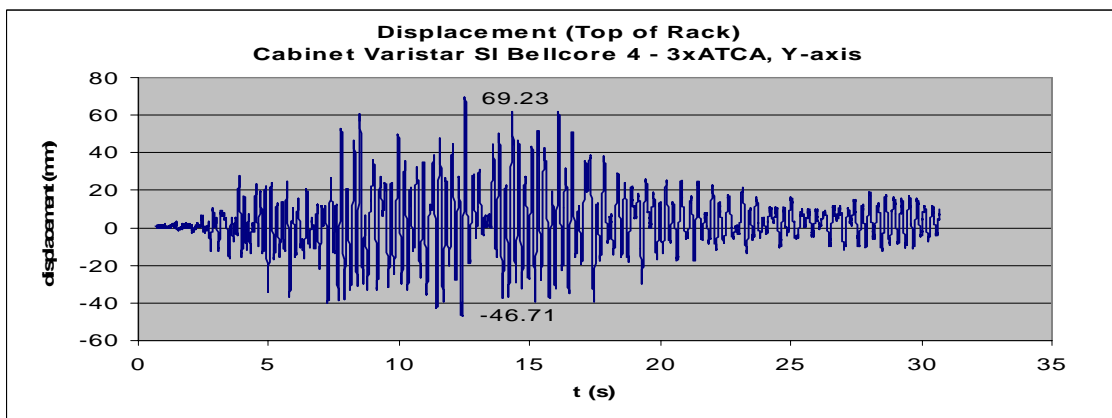


Figure 6.14: illustrates the displacement at top of EUT Y-axis

In **vibration direction vertical (Z-axis)** no displacement was measured.

6.4 Evaluation

The EUT **CONFORMS** with the Earthquake Requirements acc. EN 300 019-2-3 Class 3.1-3.6.