

IP Hardware Replacement Guide

RG-IP-RP1000-IP-HARDWARE-Q216V1



⚠ Attention

1 Before asking for your IP Hardware replacement, please complete the following:

- Provide your IP HARDWARE *serial number*

2 Mark down the following:

- IP address
- Subnet mask
- Gateway

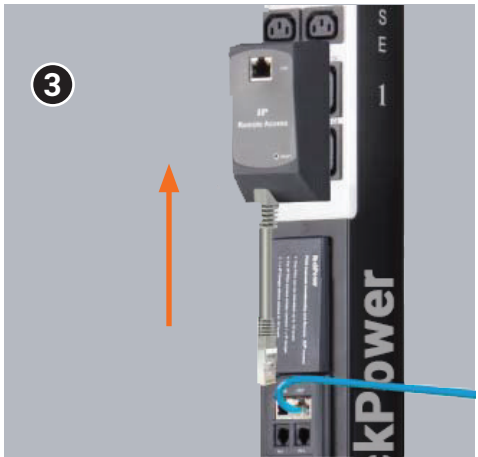
HOW TO REPLACE THE IP HARDWARE



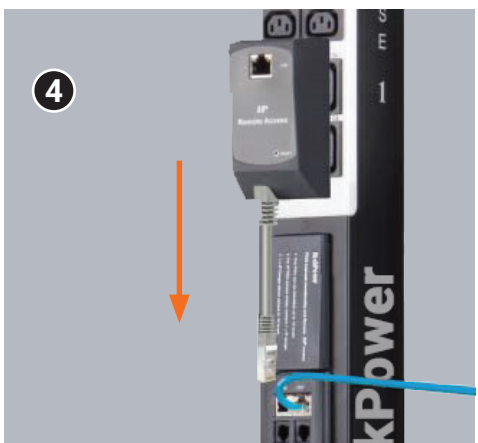
Step 1: Disconnect LAN cable from the faulty IP HARDWARE



Step 2: Disconnect the IP HARDWARE jack from the meter



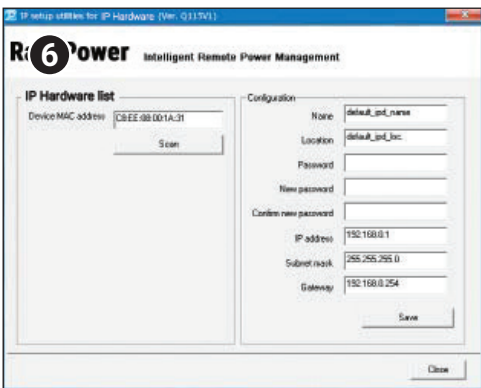
Step 3: Slide out the faulty IP HARDWARE from the plate



Step 4: Slide and fix the new one on the plate



Step 5: Plug RJ-45 jack into the meter LINK port

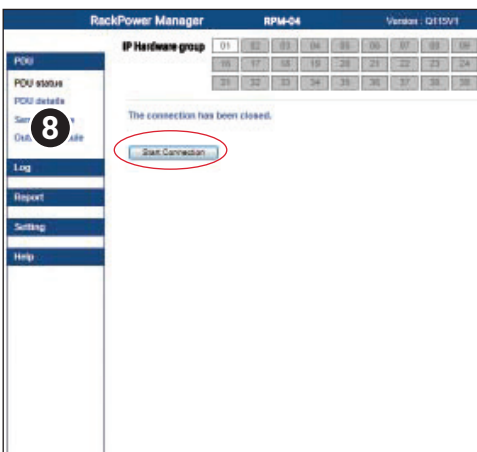


Step 6: Configure the IP HARDWARE
- Please refer to the RPM-04 user manual
Part II. Software < 2.2 > IP Hardware Configuration

! If IP HARDWARE in DHCP setting, please skip step 6 and refer to the RPM-04 user manual section 7.3 to enable the DHCP setting.



Step 7: Connect the LAN cable to the IP HARDWARE



Step 8: Go to RPM-04 < Status > page
- Click "Start Connection"

END



Our powerful portfolio of brands:

CADDY ERICO HOFFMAN RAYCHEM SCHROFF TRACER

©2018 nVent. All nVent marks and logos are owned or licensed by nVent Services GmbH or its affiliates. All other trademarks are the property of their respective owners. nVent reserves the right to change specifications without notice.

H84283_1809

[nVent.com/SCHROFF](https://www.nVent.com/SCHROFF)