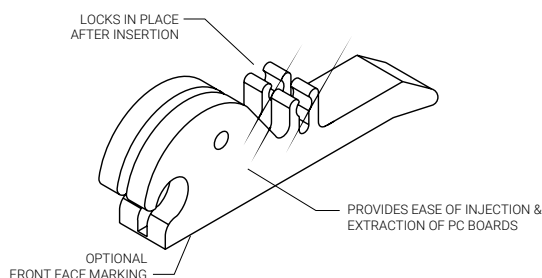
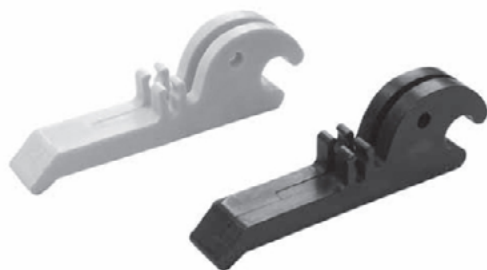


Series 87 Locking Nylon Extractor

CONNECT AND PROTECT



MATERIALS AND FINISH

- **Extractor:** Type 6/6 Nylon per ASTM-D-4066, Type I
- **Pin:** Stainless steel, passivated

APPLICATION DATA

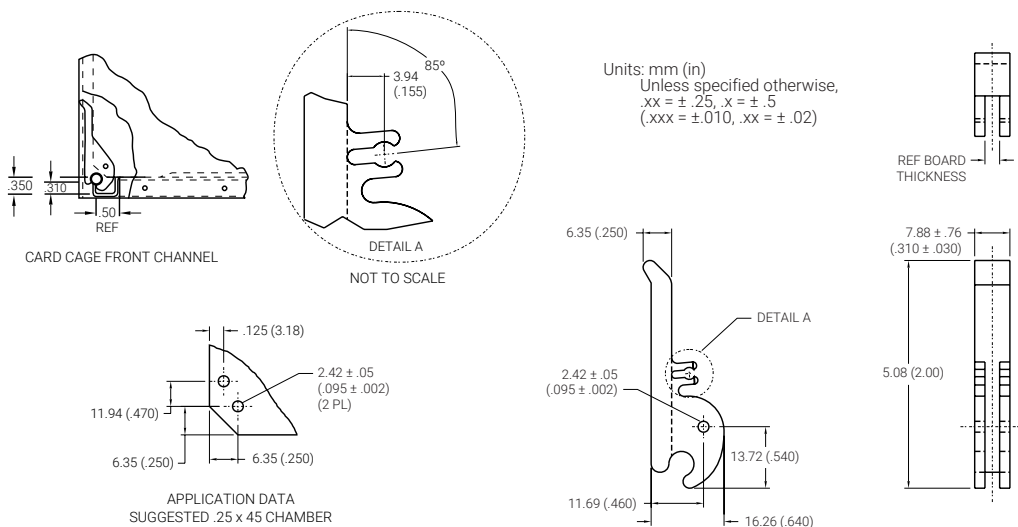
Two inserter or inserter-extractors are recommended per printed circuit board taller than 127 (5) in height.

COLOR

Series 87 standard color is natural. Other colors available, please contact an Application Engineer with your requirements.

HOT STAMPING

Hot stamp marking service is available. Please contact an Application Engineer with your requirements.



Part Number Code

Series 87 Nylon Locking Extractor	87	-x
Board Thickness		
1.59 (.063)		2
2.38 (.094)		3
3.18 (.125)		4

Part Number Code example: 87-3

Series 87 Extractor for .094-in. (2.38-mm) board

BIRTCHEr™

nVent SCHROFF, Inc., 7328 Trade Street, San Diego, CA 92121 USA, +1 800-525-4682

Our powerful portfolio of brands:

CADDY ERICO HOFFMAN RAYCHEM SCHROFF TRACER