

## PRODUCT BRIEF

---

# Pigeon Point ChMM-700R Starter Kit

## Chassis Management Starter Kit

## Chassis Management Starter Kit Add-on

For ANSI/VITA 46.11-2022 based VPX Chassis

July 18, 2023

**nVent**  
Schroff GmbH  
[hardware.management@nVent.com](mailto:hardware.management@nVent.com)  
  
[www.pigeonpoint.com](http://www.pigeonpoint.com)  
[schroff.nVent.com](http://schroff.nVent.com)



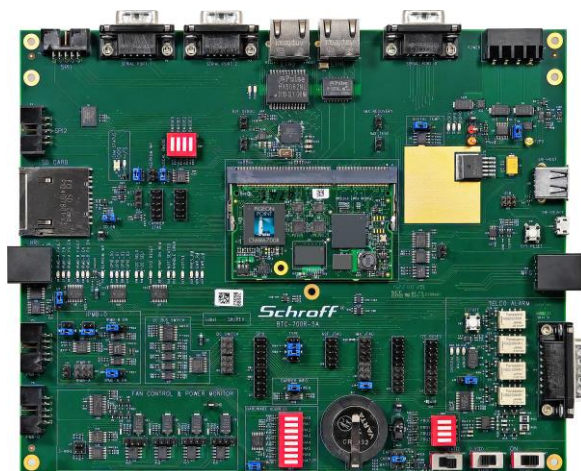
All nVent brands and logos are the property of nVent or its affiliated companies worldwide. nVent reserves the right to change information without prior notification.

This Pigeon Point Chassis Management Starter Kit provides everything you need to quickly and cost-effectively develop compliant and interoperable ANSI/VITA 46.11-2022 Tier-2 Chassis Management Controllers.

The Chassis Management Starter Kit includes:

- Schematics for a ChMM-700R carrier board, ready for adaptation to the needs of your chassis.
- Bench top hardware, including a Chassis Manager and Intelligent Platform Management Controller (IPMC), allowing your ramp up on VITA 46.11 management to start immediately.
- One-stop support for hardware, firmware and software used in developing and delivering your Pigeon Point ChMM-700R based VITA 46.11 Tier-2 Chassis Manager.

Please see the separate *Pigeon Point ChMM-700R and Chassis Manager Product Brief* for more details on the core components in this Starter Kit that are summarized below.



### Bench top Chassis Manager

- Pigeon Point ChMM-700R Chassis Management Mezzanine with Pigeon Point Chassis Manager
- BTC-700R Bench Top Carrier provides a socket for the ChMM-700R and on-carrier resources similar to an actual in-chassis ChMM-700R carrier
- BTC-700R can be cabled together with the included bench top IPM Controller to form a two-node bench top VITA 46.11 IPMI network

### Software, schematics & documentation delivered via secure website

- Overall partner page lists the individual product pages for the Pigeon Point products licensed by your company, accessed via company-specific credentials
- Product pages enable instant access to any updated materials that become available for a given product, an example Chassis Manager Release Page is shown below
- Pigeon Point ChMM-700R supports reliable, remote firmware upgrade over an Ethernet connection for all ChMM-700R-resident firmware
- Pigeon Point ChMM-700R and Chassis Manager Product Brief provides more details on ChMM-700R firmware upgrade facilities

### Chassis Manager Starter Kit Add-on

The ChMM-700R-T3VPX-SKA Starter Kit Add-on is available for customers that need to develop compliant and interoperable VITA 46.11-2022 Tier-3 Chassis Management Controllers. This kit is an add-on to the ChMM-700R-VPX-SK Starter Kit for Tier-2 Chassis Management Controllers and additionally includes access to the Tier-3 Chassis Manager images, refer to the below example Chassis Manager Release Page.



World-Class Management Components  
FOCUSED. DEPENDABLE. PROVEN.

PARTNER PAGE

### Pigeon Point Chassis Manager Release Page

#### Export Control Classification Number

[export README](#)

Additional Export Information

#### Upgrade Images and Instructions

[ChMM-700R Images](#)

[Tier-3 ChMM-700R Images](#)

Upgrade instructions for ChMM-700R

(restricted) Upgrade instructions for ChMM-700R Tier-3

#### Documentation

[ChassisManagerREL.pdf](#)

[ChassisManagerUG.pdf](#)

[ChassisManagerEIR.pdf](#)

Pigeon Point Chassis Manager Release Notes

Pigeon Point Chassis Manager User Guide

Pigeon Point Chassis Manager External Interface Reference

#### Utilities

[SDR/FRU Compilers](#)

[RMCPTA Utility](#)

[HPDL Compiler](#)

Python based FRU/SDR compilers

RMCPTA – RMCP Test Agent

HPDL - Compiler

## PPMM-700R carrier reference design schematics and bill of materials<sup>1</sup>

- PPMM-700R carrier reference design schematics provided in PDF form
- In addition to supporting a bused System IPMB topology the PPMM-700R carrier reference design also includes the needed hardware design materials for customers to implement a radial System IPMB topology, using one or more Microsemi SmartFusion FPGA(s) on the PPMM-700R carrier.
- Bill of materials includes materials for both the core carrier reference design and additional parts used on the bench top reference implementation



World-Class Management Components  
FOCUSED. DEPENDABLE. PROVEN.

PARTNER PAGE

### BTC-700R Resource Page

#### Carrier Design Materials

<a href="#">ppmm700r-btc-ts-2_0_0.pdf</a>	BTC-700R Technical Specification
<a href="#">ppmm-700r-carrier-rd-hwdesign-3_2.zip</a>	PPMM-700R Carrier hardware reference design files, includes schematics (pdf and OrCAD design database) and Bill Of Materials.

#### Radial IPMB SmartFusion FPGA Images

##### Release Notes

<a href="#">radial_ipmb_fpga_rn_1_3-1_0_1_0.pdf</a>	Radial IPMB FPGA Image Release Notes
---	--------------------------------------

#### Radial IPMB SmartFusion FPGA Images

<a href="#">radial_ipmb_fpga-1_3-1_0_1_0.dat</a>	SmartFusion FPGA data file
<a href="#">radial_ipmb_fpga-1_3-1_0_1_0.pdb</a>	SmartFusion FPGA Program Database File

## Technical specifications

- Pigeon Point Management Mezzanine (PPMM-700R) Hardware Architecture Technical Specification
- Pigeon Point Management Mezzanine (PPMM-700R) Bench Top Carrier Technical Specification

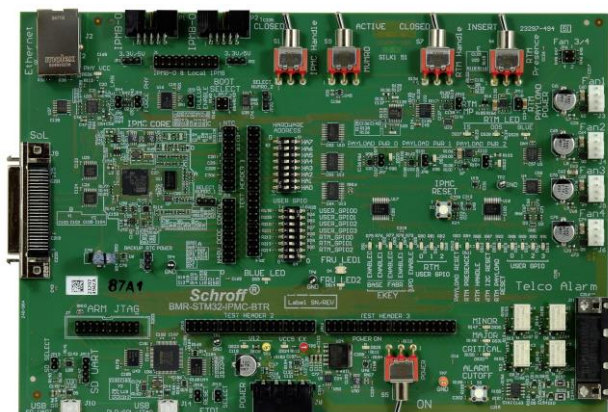
<sup>1</sup> The ChMM-700R is based on a hardware platform called the Pigeon Point Management Mezzanine 700R (PPMM-700R). That platform can also be configured for PICMG's AdvancedTCA, where nVent offers a complementary Pigeon Point Shelf Manager, running on the ShMM-700R. Separate product briefs cover that product.

## Pigeon Point Linux for ChMM -700R

- Special Pigeon Point distribution optimized for cross development of ChMM-hosted applications, especially the Chassis Manager
- Key features for Chassis Manager application include:
  - Based on Linux 2.6.34 kernel port
  - Specific support for Freescale i.MX287 processor and its peripherals, as well as the auxiliary Microsemi SmartFusion FPGA

## Bench top IPMC

One board supplied; can be cabled together with the bench top Pigeon Point Chassis Manager (see above) to form a two-node bench top VITA 46.11 IPMI management network.



## Ordering Information:

ChMM-700R-VPX-SK Part #: 21991-140	Chassis Management Starter Kit for supporting Tier-2 Chassis Managers in VITA 46.11-based VPX chassis
ChMM-700R-T3VPX-SKA Part #: 21991-860	Chassis Management Starter Kit Add-on for supporting Tier-3 Chassis Managers in VITA 46.11-based VPX chassis (requires separately purchased ChMM-700R-VPX-SK Chassis Manager Starter Kit)
BTC-700R-GbE-VPX Part #: 21991-847	Bench top carrier board. Includes ChMM-700R module and power supply.